

RETAIL UNIT FOR LEASE



460

ELGIN MILLS ROAD EAST,
RICHMOND HILL, ON



GOOGLE STREETVIEW



PROPERTY WEBSITE



VIDEO TOUR

Creiland Consultants Realty Inc.

250 Consumers Road, Suite #1007
North York, Ontario, M2J 4V6

www.creiland.com



MIR ALI ASGARY, CCIM
BROKER OF RECORD

📞 647 891 4321
📞 1 800 980 6668
✉️ masgary@creiland.com




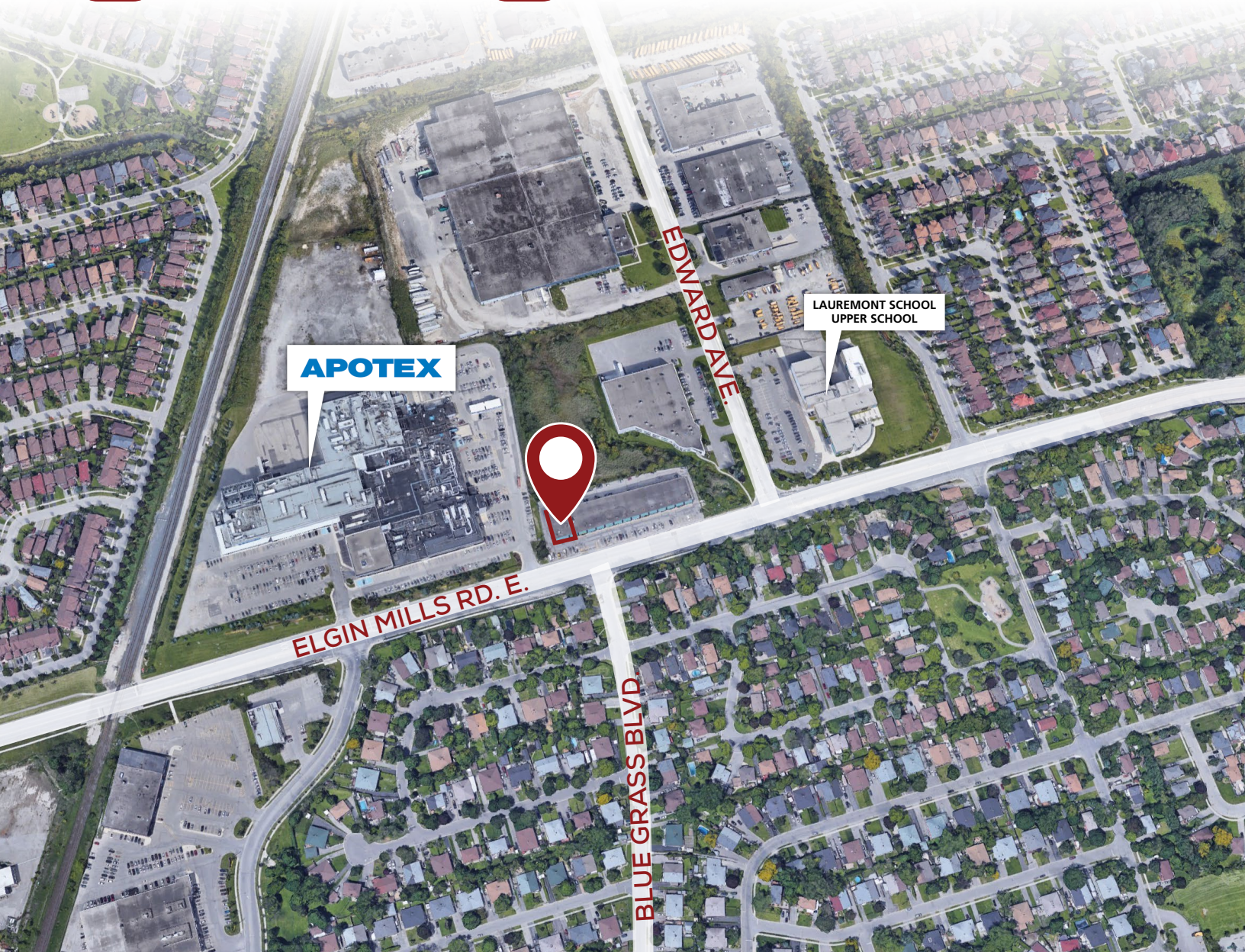
ADAM G. WATSON, CCIM
SALES REPRESENTATIVE

📞 416 910 8735
📞 1 800 980 6668
✉️ awatson@creiland.com

PROPERTY OVERVIEW

Former shipping business endcap unit with prime exposure onto Elgins Mill Road East , featuring a bright open concept retail area with an office on the mezzanine level. Convenient access to Highways 400 and 407. Located in a high traffic plaza in desirable South Central York Region, surrounded by residential communities, a nearby school, and a shopping mall that provides a strong and established customer base. No food use is permitted due to parking limitations

-  **3,000 SF UNIT #1**
-  **\$25.00 PSF Net RENTAL RATE**
-  **\$7.25 PSF T.M.I (EST. 2026)**
-  **July 1, 2026 POSSESSION DATE**
-  **MC-1 ZONING**



PROPERTY TYPE
RETAIL FOR LEASE



PROPERTY INTERSECTION
ELGIN MILLS ROAD EAST / EDWARD AVENUE

NEARBY AMENITIES



EXTERIOR PHOTOS



INTERIOR PHOTOS



ZONING - HIGH PERFORMANCE COMMERCIAL INDUSTRIAL (MC-1)



Within this Zone, the following uses are permitted uses:

- Warehousing of Goods & Materials
- Assembly of Manufactured Goods & Materials
- Manufacture of Goods & Materials
- Printing Establishments
- Research & Development Establishments
- Office Accessory to Permitted Uses on the same Lots
- Data Processing Centres
- Financial Institutions
- Technical & Commercial Schools
- Restaurants and Taverns excluding Take Out Restaurants
- Parking Garages
- Business & Professional Office

LOCATION OVERVIEW

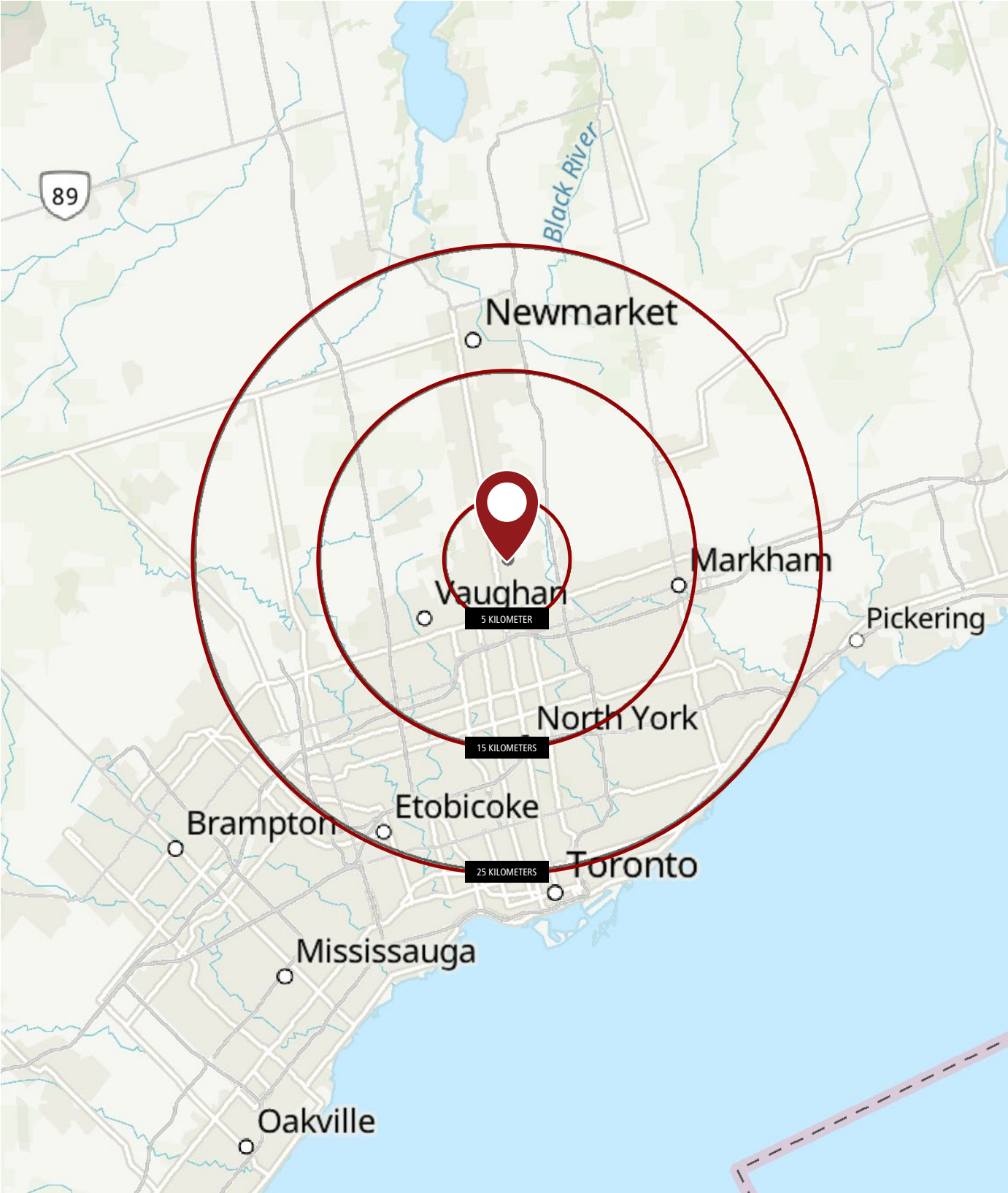


Richmond Hill is a vibrant suburban town located just north of Toronto, known for its blend of urban convenience and natural beauty. It has grown rapidly over the past few decades, transforming from a quiet village into a diverse and thriving community.

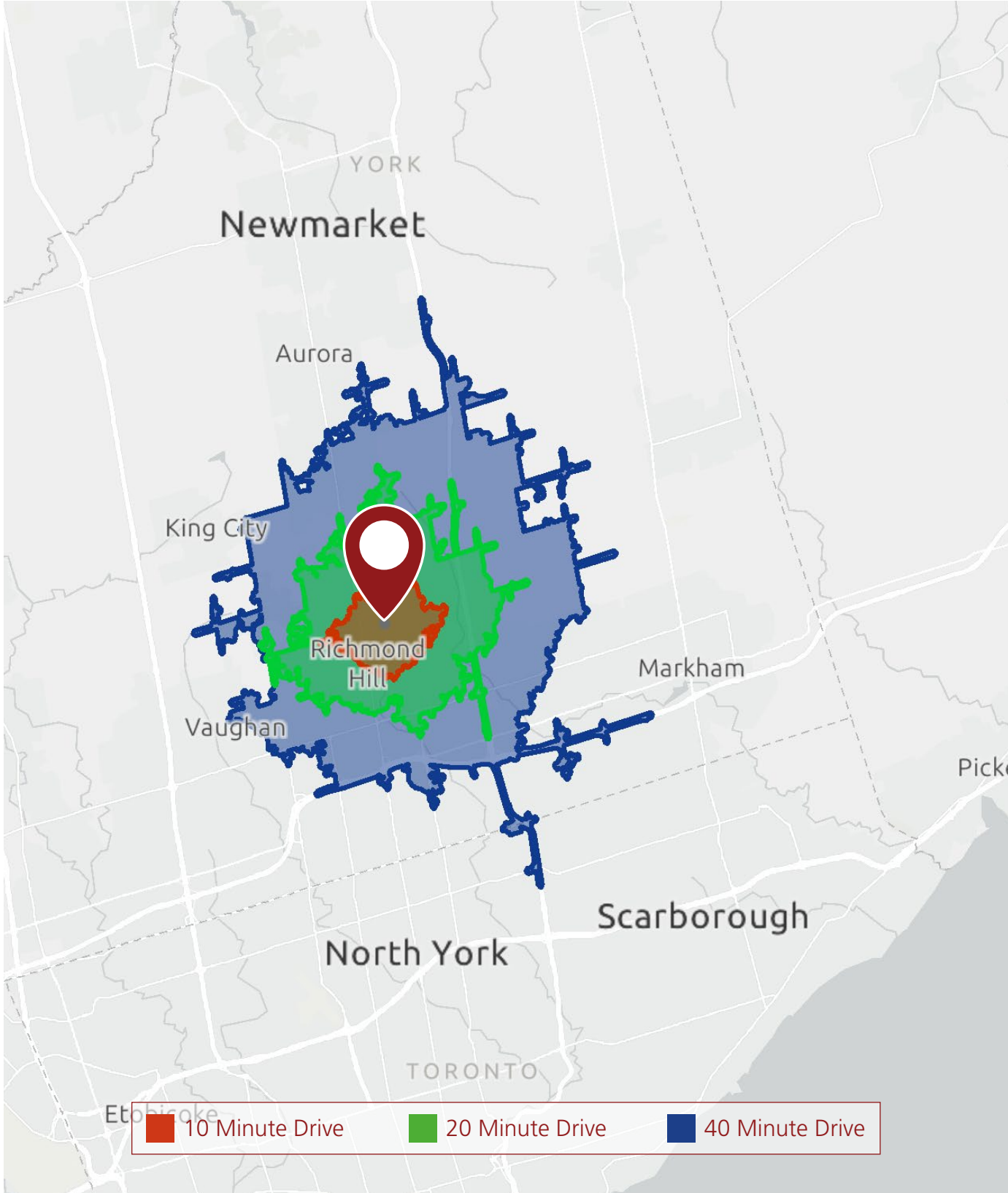
Richmond Hill is especially recognized for its strong emphasis on quality of life, offering residents excellent schools, safe neighborhoods, and a wide range of recreational facilities. The town is home to numerous parks, trails, and green spaces, including the popular Richmond Green Sports Centre and Park, which serves as a hub for community activities and events.

Its diverse population contributes to a rich cultural landscape, reflected in the variety of restaurants, festivals, and cultural institutions found throughout the area. Richmond Hill also has a growing economy supported by technology companies, small businesses, and professional services. Convenient transportation links, including highways and public transit options, make it an attractive place for commuters working in Toronto. Overall, Richmond Hill stands out as a well-balanced community that combines modern development with a strong sense of community and access to nature.

DISTANCE MAP



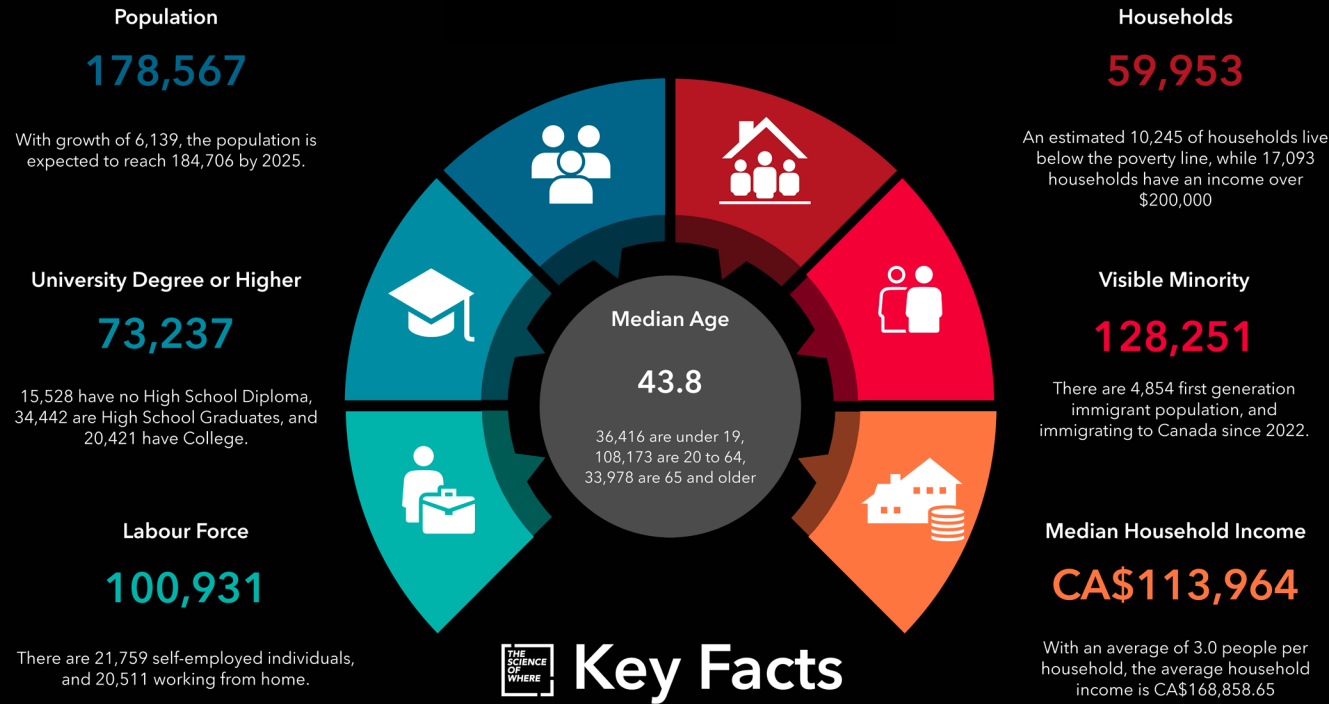
DRIVE TIME MAP



KEY FACTS

**460 Elgin Mills Rd E, Richmond Hill, Ontario,
L4C 5E7**

Ring of 5 kilometer



esri Canada

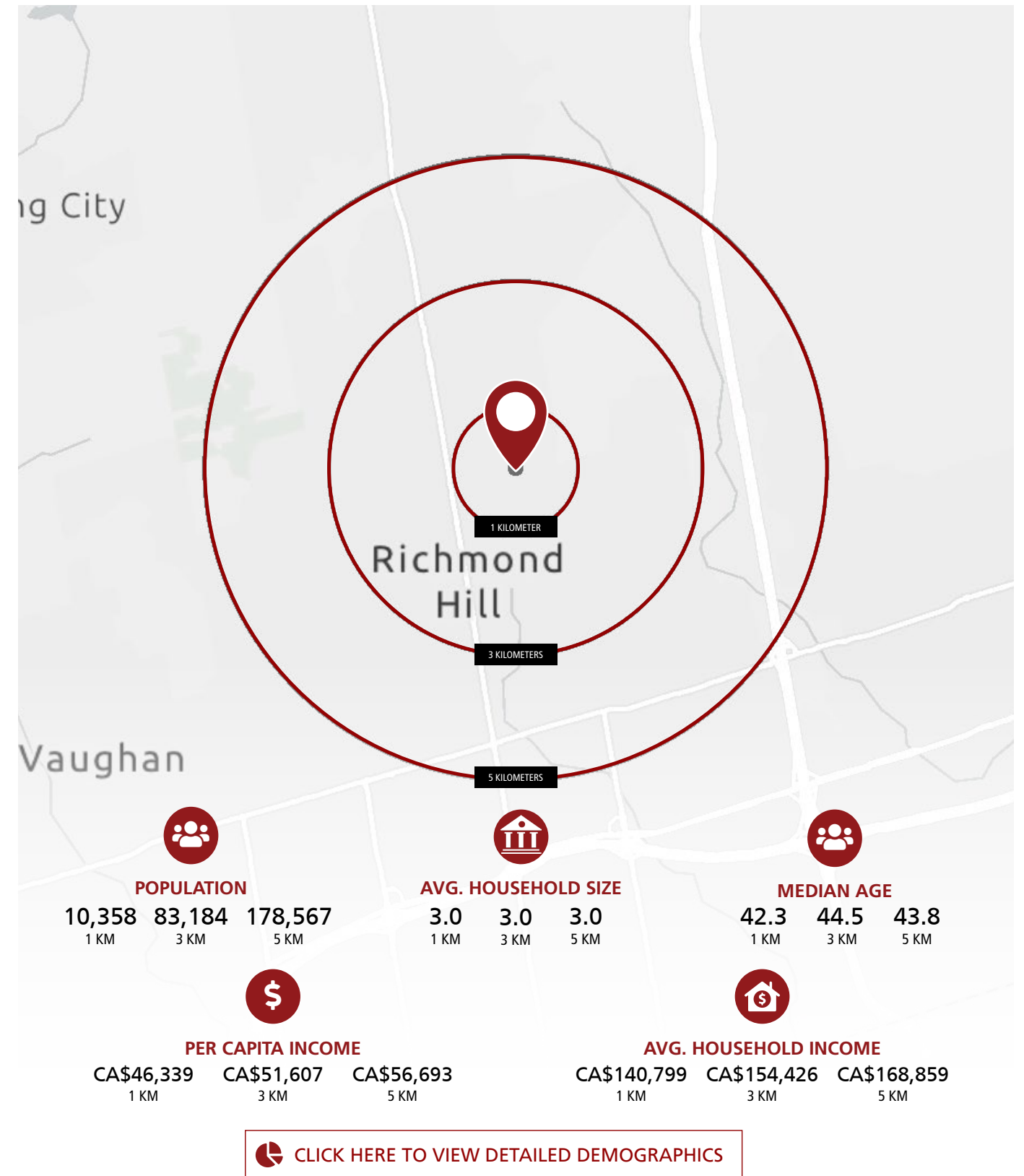
Source: This infographic contains data provided by Environics (2025, 2030).

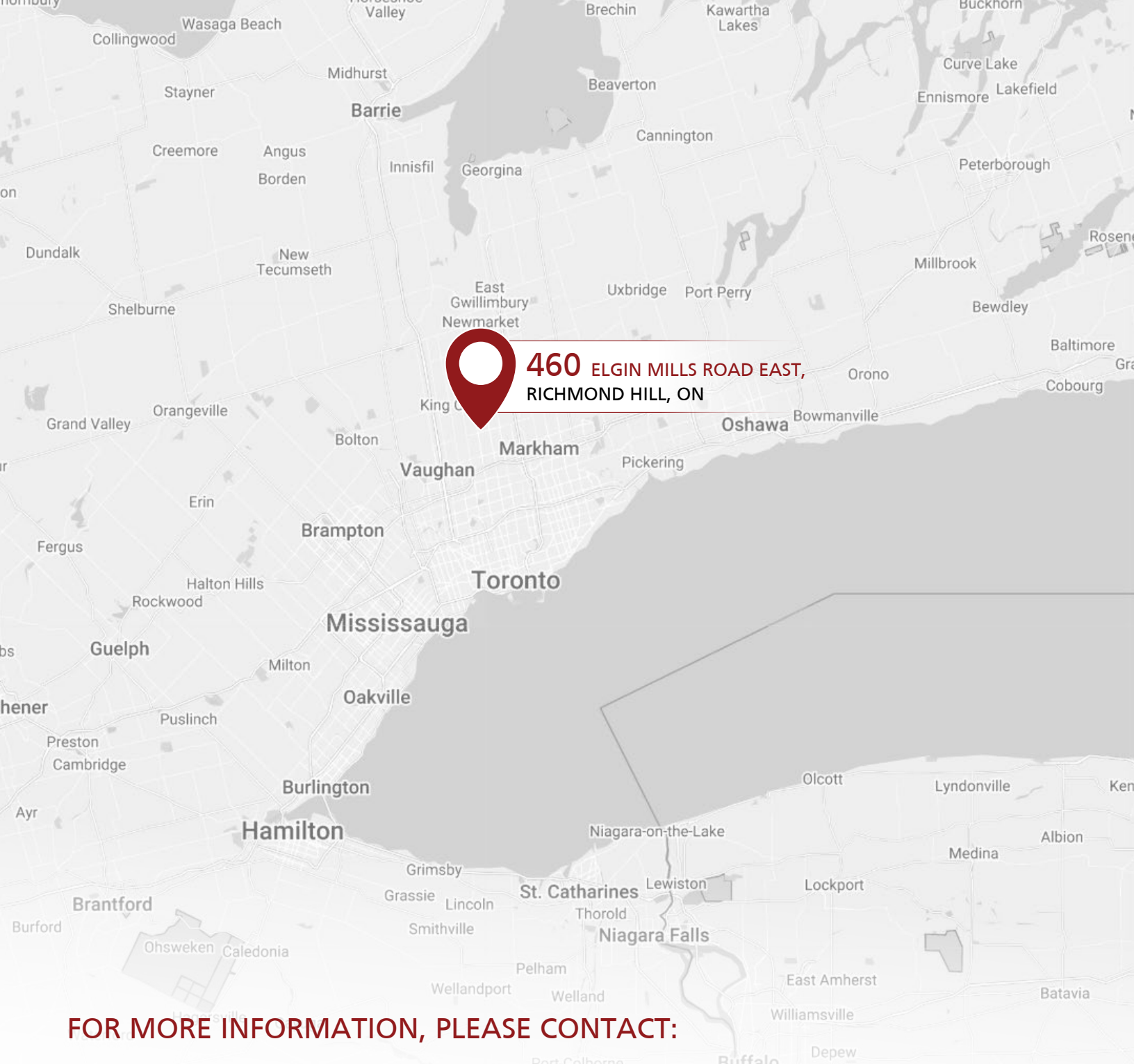
© 2026 Esri

MULTIPLE LISTING SERVICE NUMBER

N12904574

DEMOGRAPHICS





**460 ELGIN MILLS ROAD EAST,
RICHMOND HILL, ON**

FOR MORE INFORMATION, PLEASE CONTACT:



MIR ALI ASGARÝ, CCIM
BROKER OF RECORD
☎ 647 891 4321
☎ 1 800 980 6668
✉ masgary@creiland.com



ADAM G. WATSON, CCIM
SALES REPRESENTATIVE
☎ 416 910 8735
☎ 1 800 980 6668
✉ awatson@creiland.com



CORINNE C. SARIT
CLIENT SERVICES MANAGER
☎ 647 670 0066
☎ 1 800 980 6668
✉ admin@creiland.com



**CREILAND
CONSULTANTS**

CREILAND CONSULTANTS REALTY INC.

250 Consumers Road, Suite #1007, North York, Ontario, M2J 4V6

www.creiland.com